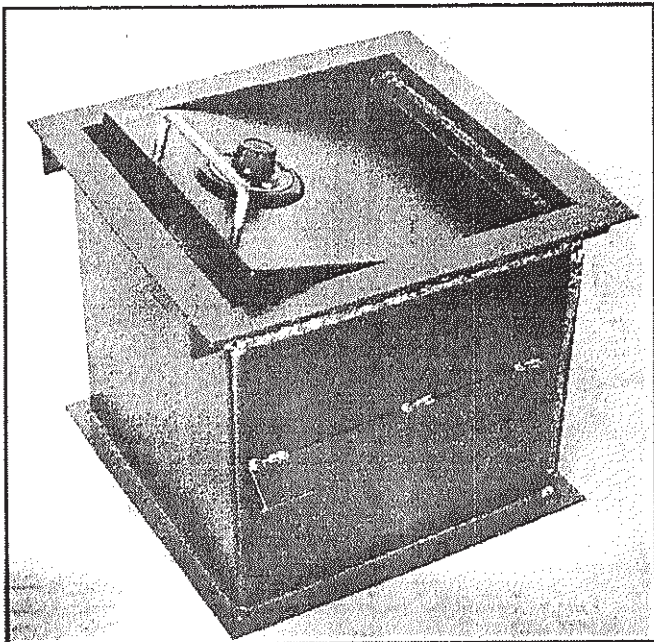
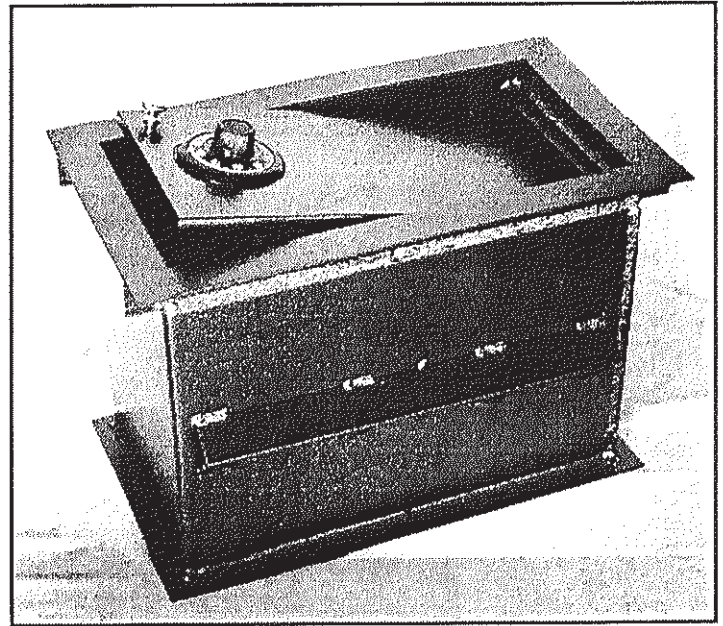




STANDARD FLOOR SAFES

- Heavy Duty Construction
- Removable Lid
- Combination Lock or Keylock
- Available in 4 Sizes



The Standard Range of Floor Safes are designed for installation into a concrete floor, where the unit is easily concealed under floor coverings. The large door opening allows for easy access.

PROUDLY MANUFACTURED IN AUSTRALIA

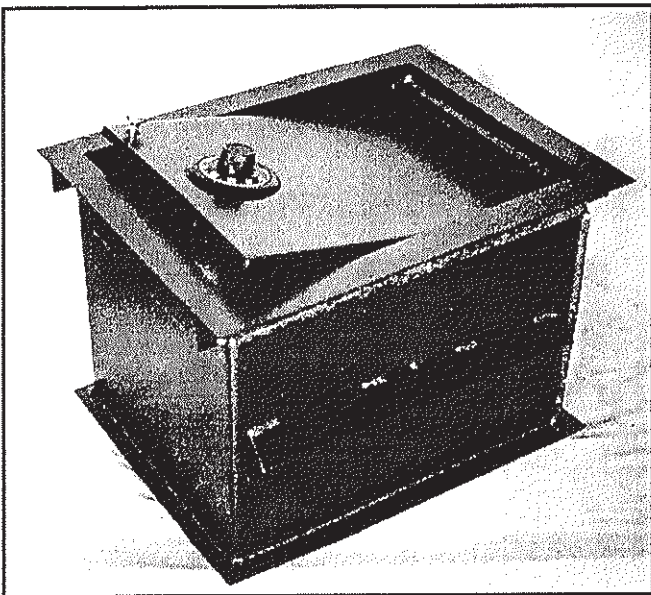
STANDARD FLOOR SAFES

SPECIFICATIONS

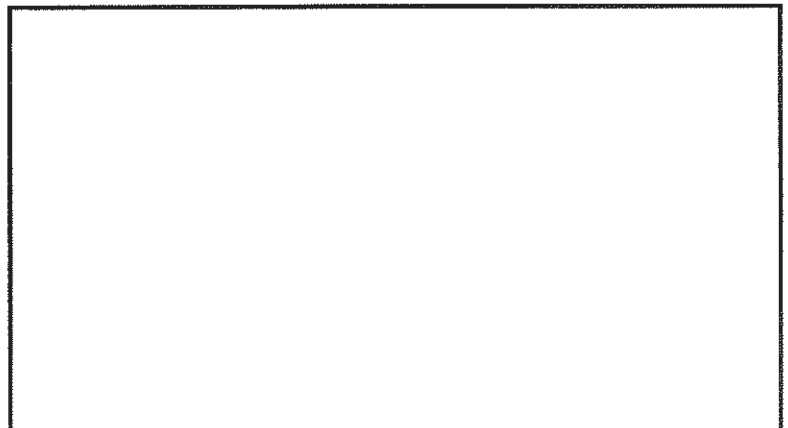


- LID** Heavy Duty Door 12mm thick steel
The Lock is further protected by hardened plate
The Lid is removable for easy servicing
- BODY** The Body Cannister is folded and fully welded for uniform strength and it features an oversize base
- LOCKING** One (1) Three number combination Lock giving 1,000,000 different combinations
OR
One (1) 6 Lever pick resistant Keylock
- RELOCKER** Each Safe is fitted with a secondary Relocking System which engages should the main lock be dislodged.
- FINISH** The Safes are finished in a high quality Powder Coat

	Internal			External			Capacity	Weight
	Height	Width	Length	Height	Width	Length		
FS8	290mm	230mm	230mm	350mm	300mm	300mm	15 L	22kg
FS12	290mm	330mm	330mm	350mm	400mm	400mm	31 L	35kg
FS816	290mm	230mm	430mm	350mm	300mm	500mm	29 L	33kg
FS1216	290mm	330mm	430mm	350mm	400mm	500mm	41 L	41kg



Available from



Marketed by:

We reserve the right to alter these specifications without notice and without incurring any legal obligations.